

Alkaline Filter Kit Installation

Note

OROS-ALK has not been evaluated to NSF/ANSI standards 42 and 58.

- I. **Turn off Cold Water & Tank Valve:** Turn cold water supply valve and tank ball valve to the OFF positions. Turn system faucet to the ON position to release any built up pressure in the RO system. Once the pressure is released, turn the system faucet to the OFF position.
- II. **Mount Alkaline Filter on Stage 5 Filter:** See **Fig. 1**. Attach the provided mounting clips on the post carbon filter (stage 5) and insert the alkaline filter onto the top of the mounting clips.
- III. **Connect Alkaline Filter to Stage 5 Filter:** See **Fig. 1**. The post carbon filter output (Point A - the FLOW arrow points to the filter output) will **no longer** connect to the BLUE tubing from the faucet. Remove the BLUE tubing lock clip and remove the BLUE tubing. Remove the end plug from the quick connect fitting on the alkaline filter output (Point B). See **Fig. 2**. Cut approximately 5" of the provided WHITE tubing and insert into the post carbon filter output (Point A - the FLOW arrow points to the filter output) and the alkaline filter (Point B). Secure tubing connections on Point A and Point B with provided BLUE tubing lock clips.
- IV. **Connect Alkaline Filter to Faucet:** Remove the end plug from the quick connect fitting on the alkaline filter output (Point C - the FLOW arrow points to the filter output). See **Fig. 2**. Insert the free end of the BLUE tubing (previously connected the faucet and the stage 5 filter) into the alkaline filter output (Point C) and secure tubing connection with a provided BLUE tubing lock clip.
- V. **Check for Leaks:** Turn cold water supply and tank ball valve to ON positions. Check valves, fittings, tubing connections and housings to ensure there are no leaks.
- VI. **Flush Filter:** Allow the RO system to run for approximately 3 hours to fill the tank. When the tank is filled, the RO system will automatically shut-off. The first tank of water must be drained to flush the new alkaline filter. Do NOT use the first tank of water. Turn the RO system faucet to the ON position to drain the tank. The tank is empty when there is a noticeable drop in water pressure from the RO system faucet.

Please see reverse side of this sheet for Stage 6 Alkaline Filter Replacement Guide.

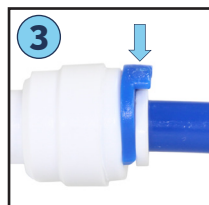
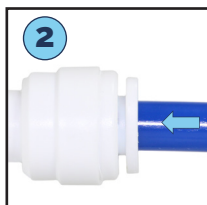


Fig. 1



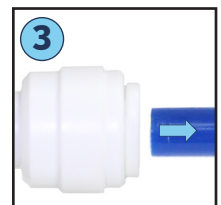
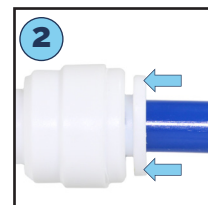
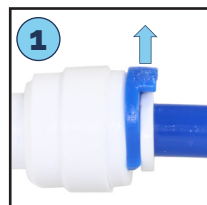
Fig. 2

How to Use Quick Connect Fittings



To Attach Tubing

Remove BLUE tubing lock clip. Insert tubing until it hits the backstop. Pull on inserted tubing to ensure it is secured and re-attach BLUE tubing lock clip.



To Release Tubing

Remove BLUE tubing lock clip. Use two fingers to push in collet to release tubing. While collet is being held, pull tubing straight out.

Alkaline Filter Replacement Guide

The alkaline filter should be replaced every 6 months. Please follow the 6th stage alkaline filter replacement steps below.

- I. **Turn off Cold Water & Tank Valve:** Turn cold water supply and tank ball valve to OFF positions. Turn system faucet to the ON position to release any built up pressure in the RO system. Once pressure has been released, turn system faucet to OFF position.
- II. **Remove Tubing & Filter:** See Fig. 1. Remove BLUE tubing lock clips and tubing from both sides (Points A and B) of the used alkaline filter. Remove and discard the used filter.
- III. **Installing the New Filter on the System:** When placing the new 6th stage alkaline filter on the main system bracket, ensure that the FLOW arrow on the filter is pointing towards the water output to the faucet (BLUE tubing). Remove the end plugs from both quick connect fittings on the new alkaline filter.
- IV. **Connect Tubing to the New Filter:** See Fig. 1. Re-insert the tubing into both sides (Points A and B) of the alkaline filter and re-attach the 2 BLUE tubing lock clips to secure tubing connections.
- V. **Check for Leaks:** Turn cold water supply and tank ball valve to ON positions. Check valves, fittings, tubing connections and housings to ensure there are no leaks.
- VI. **Flush Filter:** Allow the RO system to run for approximately 3 hours to fill the tank. When the tank is filled, the RO system will automatically shut-off. The first tank of water must be drained to flush the new alkaline filter. Do NOT use the first tank of water. Turn the RO system faucet to the ON position to drain the tank. The tank is empty when there is a noticeable drop in water pressure from the RO system faucet.



Fig. 1